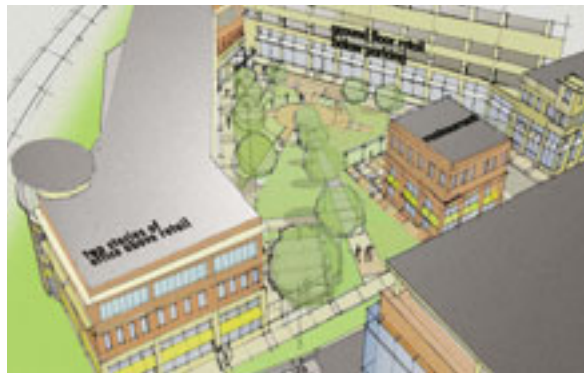


Premier Open-Air Centers

The Streets of St. Charles at Noah's Ark will be the premier mixed-use development in the St. Louis metro area. Ideally located on Interstate 70 in the heart of the City of St. Charles, this 26-acre, mixed-use development includes retail, hotel, entertainment and residential components in a New Urbanism theme.

Recently recognized by CNN's Money.com as one of the top 100 places to live, St. Charles possesses outstanding demographics. The area has excellent and growing household demographics with 2012 projected household income within 10 miles of the site of more than \$100,000. The center is located at the same interstate exit as the Ameristar Casino, Bass Pro, Old Town St. Charles and a new Embassy Suites Hotel and Convention Center.



Streets of St. Charles at Noah's Ark

Location: St. Charles, Mo. (metro St. Louis area)

Size: 1,557,660 sq. ft.

Developers: Joint venture between Cullinan Properties, Ltd., and Raven Development, LLC

Major tenants: In negotiations with restaurants, hotels, movie theater, numerous retailers—all mid-scale

Status: Phase 1 projected to open in 2010